

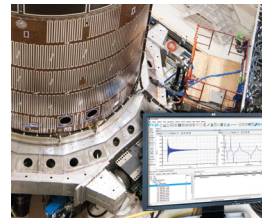
## TOP STORIES THIS NEWSLETTER



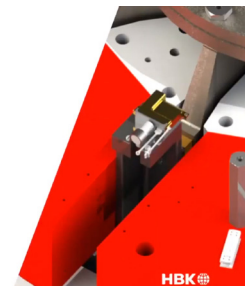
Voltage Measurement Module for EV Testing



1 and 4 channel USB Powered CCP Power Modules



Event-Triggered and Repeated Measurements Using m+p Analyzer



Shaker Vibration Testing with Inductive Centring Systems

## Voltage Measurement Module for EV Testing

The Voltage Measurement Module from MG Sensor is a compact Voltage module that can be used to interface high voltage and EV Vehicle voltage measurements for on road and crash testing applications.



**Application:**  
General test and measurement  
Fatigue  
Vehicle crash

**Properties:**  
Small housing  
Measurement range:  $\pm 1 \text{ kV} \pm 70 \text{ V}$   
Shock resistant for use in crash testing  
Low linearity error

## 1 and 4 channel USB Powered CCP Power Modules

GRAS Sound and Vibration is introducing two new products: GRAS 12BA and 12BB Microphone Power Modules aimed at engineers who need to power CCP measurement microphones and would like seamless integration of microphone sensitivity data via TEDS.

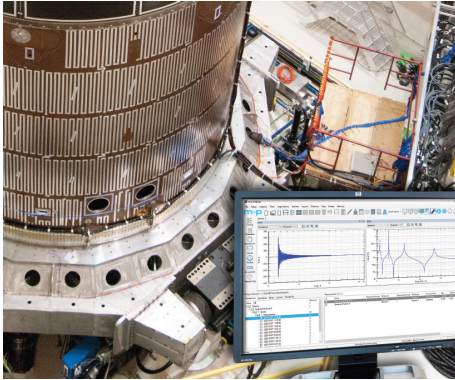


These single-channel (12BA) and four-channel (12BB) USB-powered modules provide integrated TEDS support and are competitively priced for production test applications, saving time during setup and configuration.



The 12BA and 12BB power modules can be used with any audio analyzer, with TEDS data accessed in two ways. When paired with Audio Precision's APx audio analyzers, TEDS can be read directly via the APx500 software. For use with other analyzers, TEDS data is available through the Mic Power Module App, a command-line interface for TEDS data output. The software and app ensure the accessibility of TEDS data.

## Event-Triggered and Repeated Measurements Using m+p Analyzer



Triggered measurements allow “watching” a certain measurement channel and only record a measurement when a certain signal level is exceeded. Modal impact testing is a typical example of triggered measurements where the recording is triggered by the impact of the hammer.

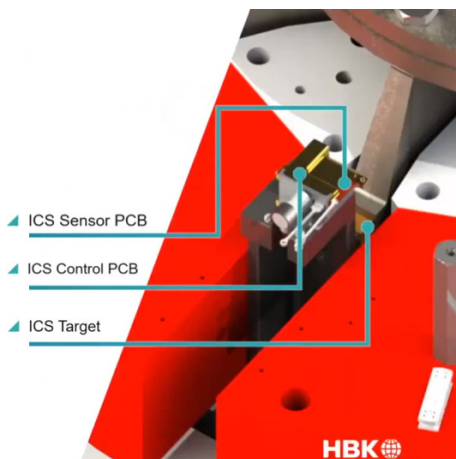
Repeated measurements can be useful when long tests or events must be monitored without the need of recording all the data completely. E.g., during a vibration test running several hours it might be required to record the spectra of all channels every 10 minutes to monitor the status of the device under test. This task can be easily accomplished using m+p Analyzer’s Sequencing feature.

[Read more about this application note here.](#)

## Shaker Vibration Testing with Inductive Centring Systems

### Centring Technology Innovation

3 part position control for easy armature and shaker assembly



The Inductive Centring System (ICS), a new sensor, patented by Brüel & Kjær, adjusts the armature position without the use of any optical targets. Thanks to its non-contact and non-optical design, the ICS is unaffected by environmental conditions. Brüel & Kjær’s non-optical and non-contact armature positioning sensor for the most precise and accurate tests.

As a purely digital sensor, the ICS makes the need for regular calibration and sensor maintenance obsolete. But this is just the beginning: the ICS is maintenance free, giving you peace of mind when running your tests. Customers will not need to wait for routine in-field service or calibration of the sensor as no technical actions are needed.

Previously only available for the LDS V8900 shaker, the ICS is now designed to work with the comprehensive LDS V8 shaker systems.

Customers, both existing and new, will be able to benefit from an ICS upgrade:

**Existing shakers:** Our best-in-class Global Field Service team can easily install the ICS on existing systems as part of an annual service

**New shakers:** We directly supply ICS as standard on your new V8 and V8900 shaker systems

Adams Technologies Private Limited  
27, Lakshmanan Street, Mahalingapuram,  
Chennai—600034  
info@adamstech.in  
+91 44 2817 3711, 4206 8668, 2817 1631.

